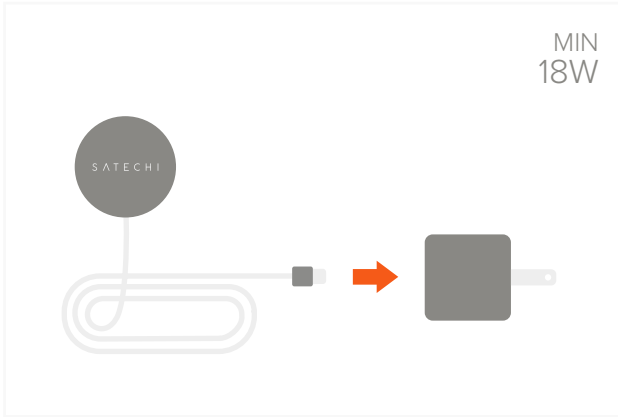
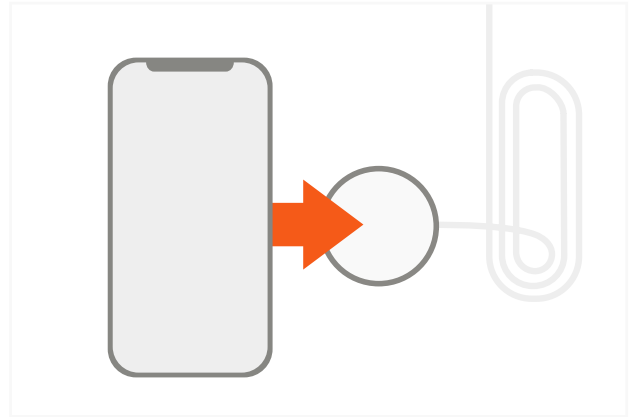


MAGNETIC WIRELESS CHARGING CABLE

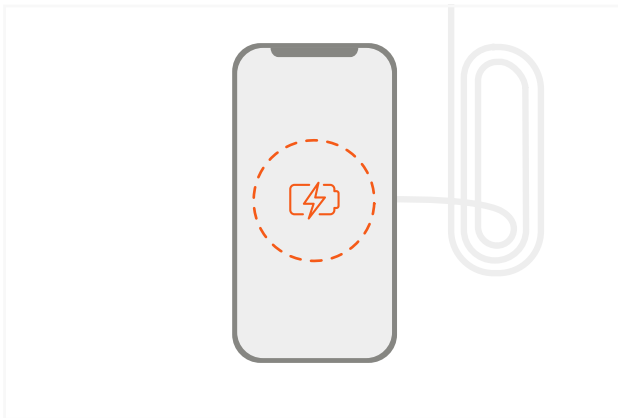
- 1 Connect the cable to a powered USB-C port.
Requires 18W or higher



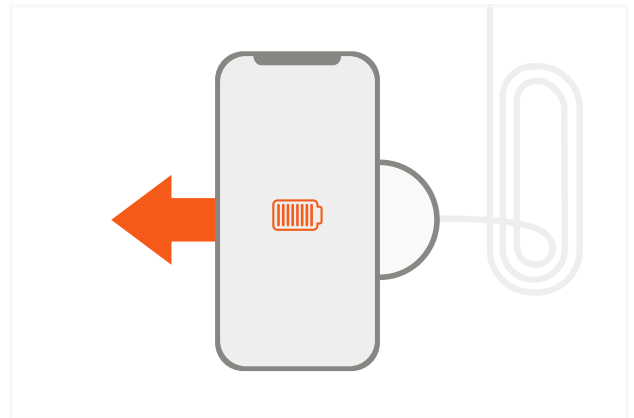
- 2 Place your iPhone face up on the charger and magnet will automatically attach.
iPhone 12 & newer models support magnetic attachment



- 3 iPhone will begin to wirelessly charge.
Up to 7.5W



- 4 Remove iPhone from charger when battery is full.



- 5 Please note iPhone 11 models or iPhone 12 cases without MagSafe will require our Magnetic Sticker (sold separately) to support magnetic attachment feature.
Without the Magnetic Sticker, iPhones mentioned will not have magnetic support

