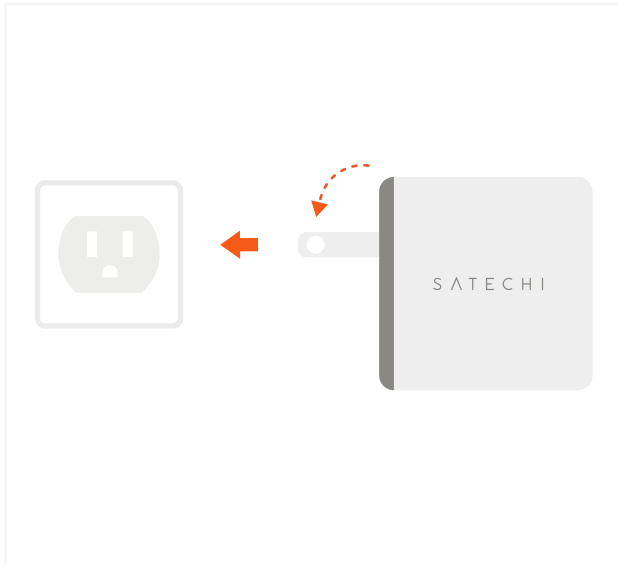


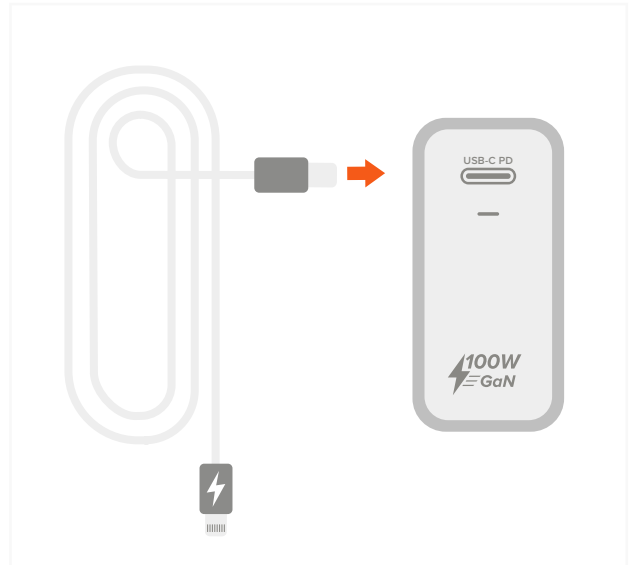
# 100W USB-C PD WALL CHARGER

**1** Plug the charger directly to a power outlet.

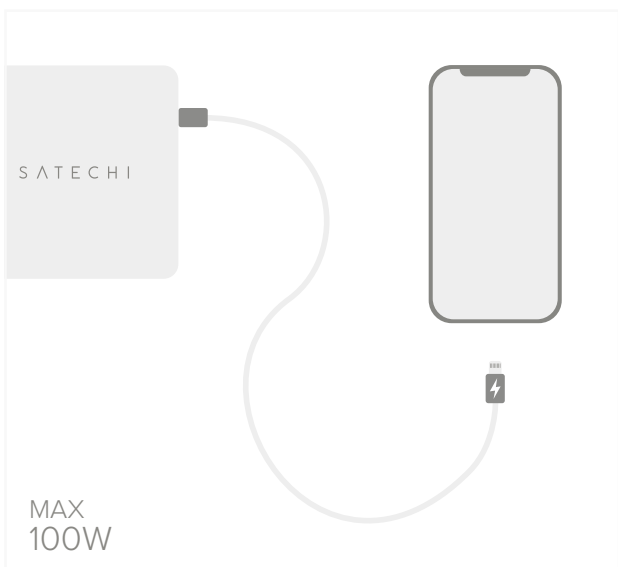


**2** Plug in cable (sold separately) to charger's USB-C PD port.

We always recommend using certified charging cables.



**3** Connect and charge an USB-C laptop, tablet, or smartphone – up to 100W.



**4** Disconnect devices and remove charger from outlet after use.

