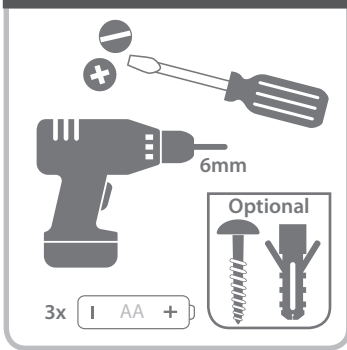
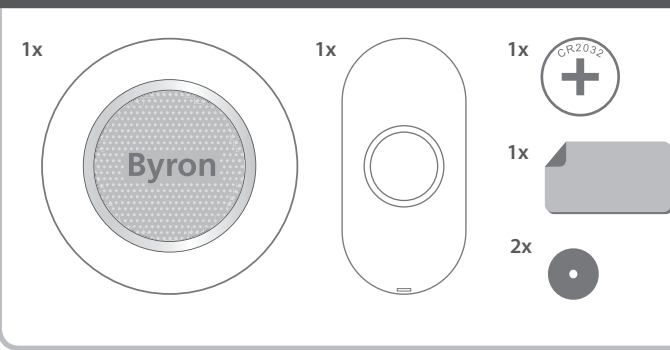


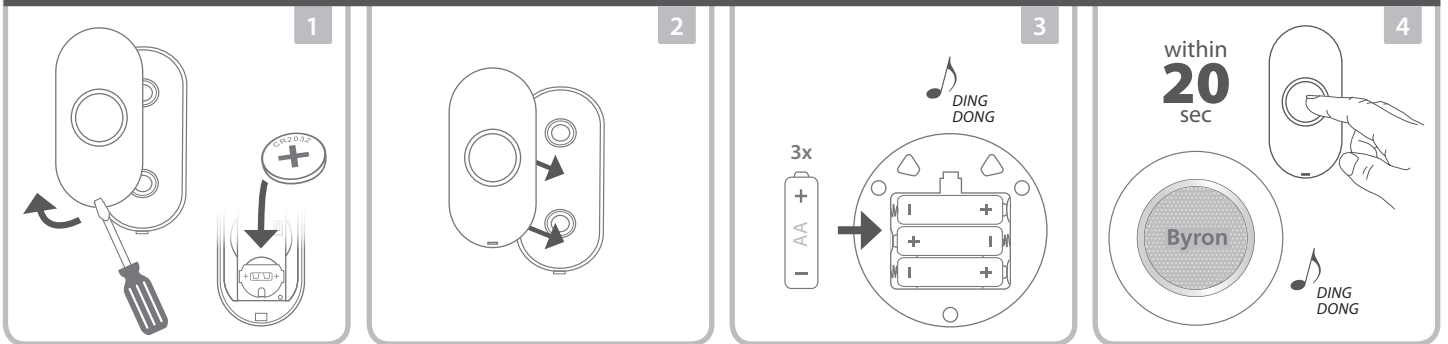
NEEDED TO START (EXCL.)



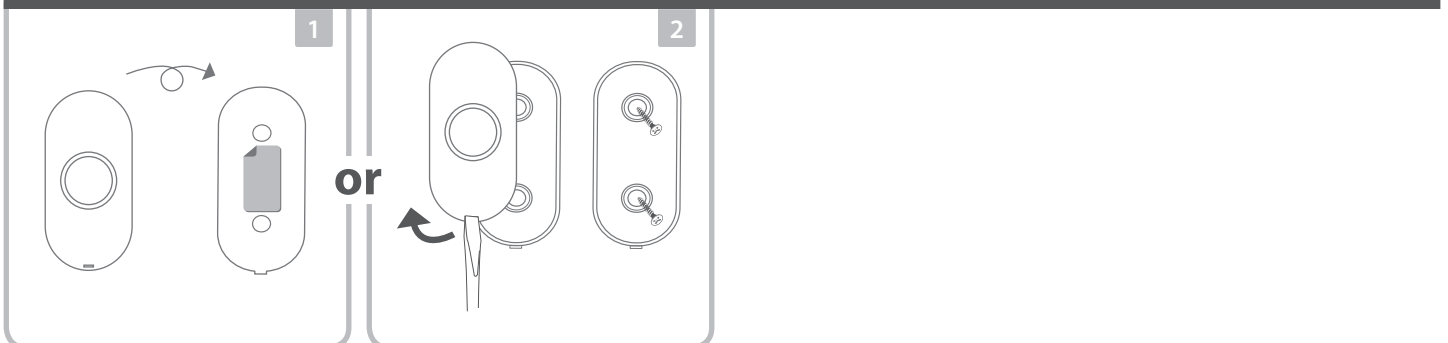
BOX CONTENT | INHALT | CONTENUS | INHOUD DOOS | CONTENUTO | CONTENIDO DE LA CAJA



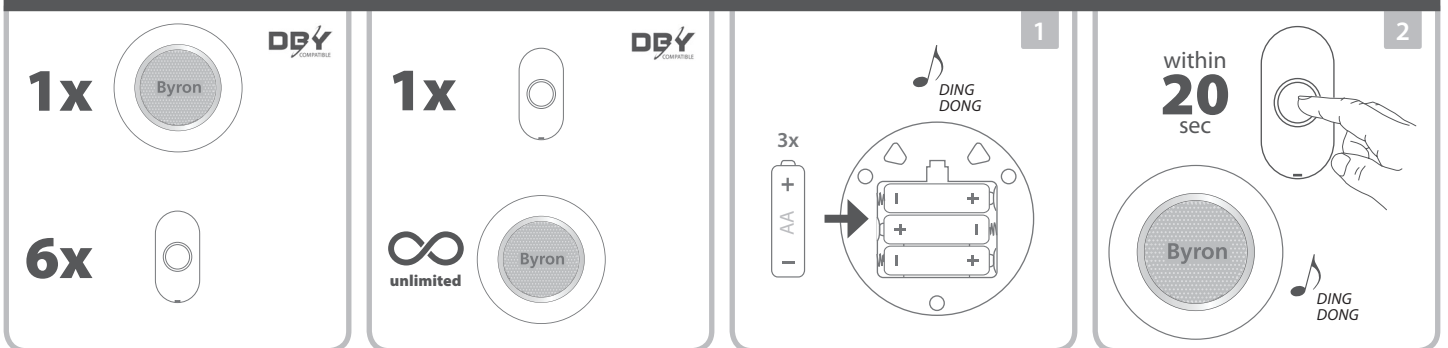
FIRST SET-UP | ERSTEINRICHTUNG | PREMIÈRE CONFIGURATION | EERSTE INSTALLATIE | PRIMO SET-UP | PRIMERA CONFIGURACIÓN



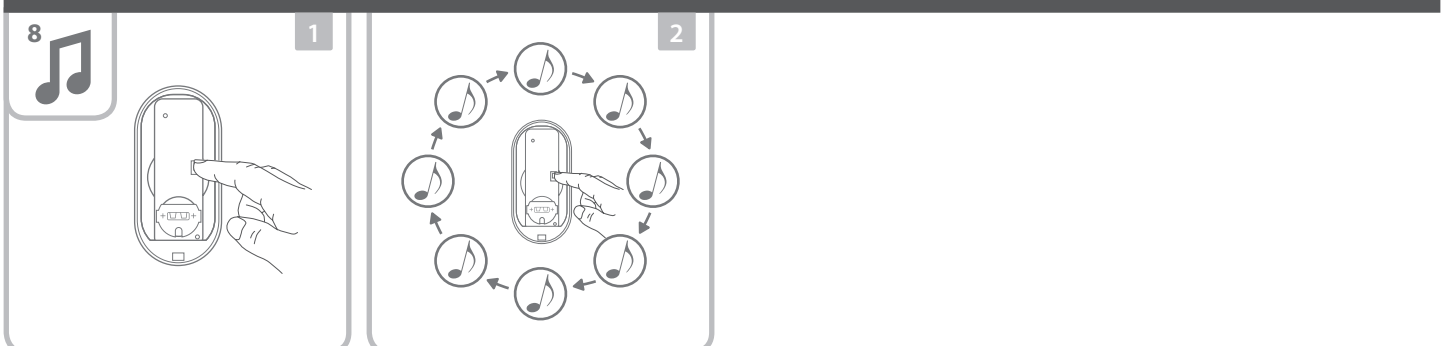
INSTALLATION | INSTALLATION | INSTALLATION | INSTALLATIE | INSTALLAZIONE | INSTALACIÓN

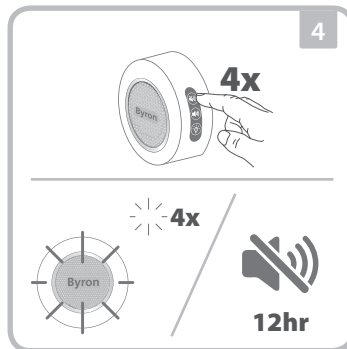
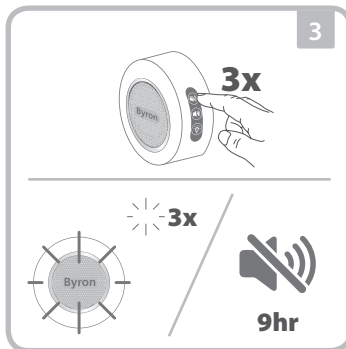
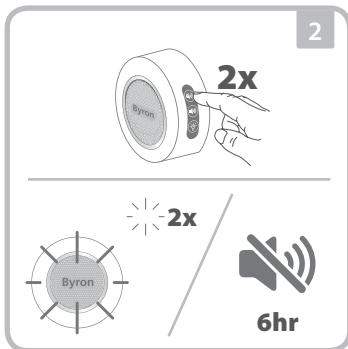
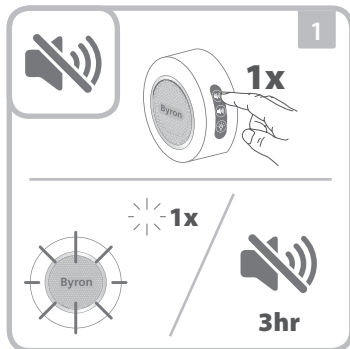
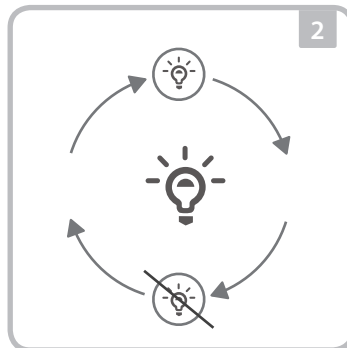
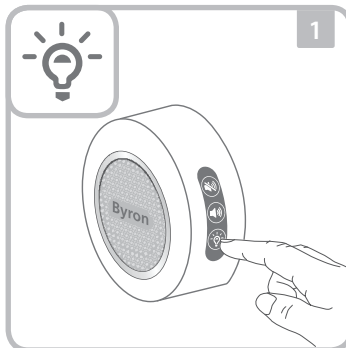
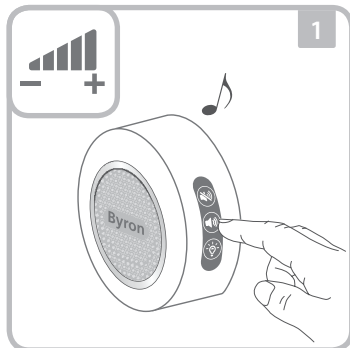


PAIRING MULTIPLE CHIMES | KOPPELN MEHRERER KLINGELN | JUMELAGE DE PLUSIEURS CARILLONS | MEERDERE DEURBELLEN KOPPELEN | ACCOPPIAMENTO MULTIPLO | EMPAREJANDO MÚLTIPLES TIMBRES



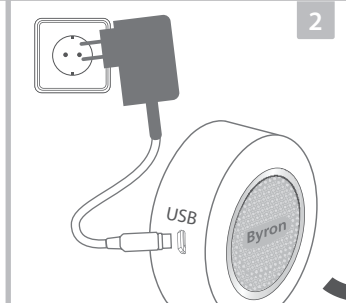
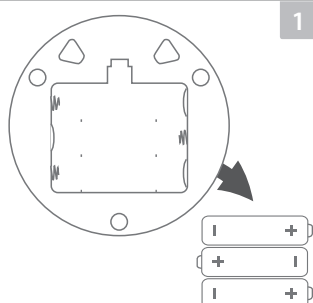
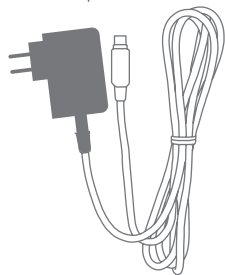
FEATURES | EIGENSCHAFTEN | CARACTÉRISTIQUES | KENMERKEN | CARATTERISTICHE | CARACTERÍSTICAS



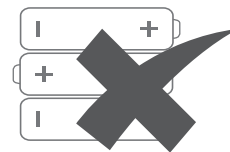


OPTIONAL

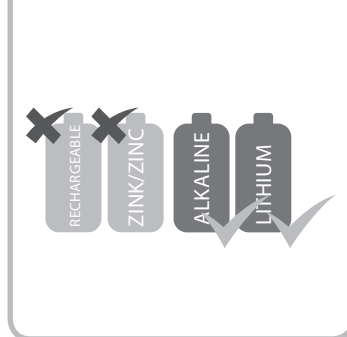
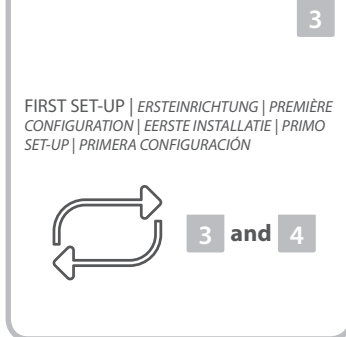
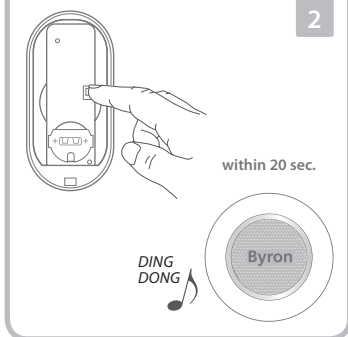
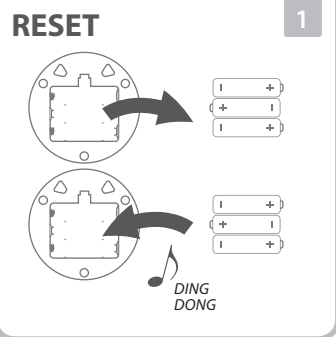
Adapter 5V - 1A | Micro USB



WARNING: DO NOT INSERT BATTERIES WHILE POWERED UP BY USB



TROUBLESHOOTING | FEHLERBEHEBUNG | RÉSOLUTION DE PROBLÈMES | PROBLEMEN OPlossen | RISOLUZIONE DEI PROBLEMI | SOLUCIÓN DE PROBLEMAS



WWW.CHBYRON.EU



Or contact us directly:

smartwares Europe Jules Verneweg 87 5015 BH Tilburg The Netherlands www.chbyron.eu	NL: 088 5940501	Lokaal tarief
	BE: 078 481094(NL)	Lokaal tarief
	BE: 078 481540(FR)	Tarif local
	FR: 0825 560 650	18ct/min
	DE: +49 (0) 1805 010762	14Ct./Min. dt. Festnetz, Mobil max. 42Ct./Min
	UK: +44 (0) 345 230 1231	
	ES: +34 938427589	

CUSTOMER SERVICE

Frequency band: 433.92MHz (433.050 - 434.790 MHz)  
 Maximum radio-frequency power: +5.92dB  
 Range: 200 meters

**Wireless Doorbell DBY-23511**  
 Power: 3 x 'AA'/LR6 1.5V: Total 4.5V  
 Indoor Use Only

**Push button - DBY-23510**  
 Power supply: 1 x CR2032 3V  
 IP44 Weather Resistant

