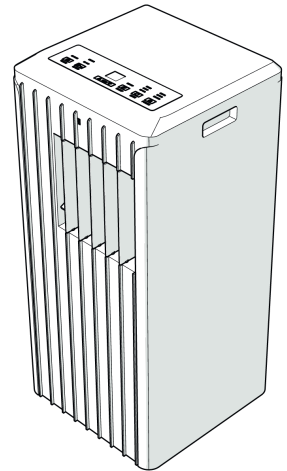




Wi-Fi Smart Air Conditioner

Article number: WIFIACMB3WT9



Nedis BV
De Tweeling 28, 5215 MC 's-Hertogenbosch, The Netherlands 02/22

Preface

Thank you for purchasing the Nedis WIFIACMB3WT9.

- This document is the user manual and contains all the information for correct, efficient and safe use of the product.
- This user manual is addressed to the end user. Read this information carefully before installing or using the product.
- Always store this information with the product for use in the future.

Product description

Intended use

The Nedis WIFIACMB3WT9 is a mobile air conditioner used for cooling and dehumidifying rooms.

The product is exclusively intended as a mobile air conditioner for domestic, indoor use. Any modification of the product may have consequences for safety, warranty and proper functioning.

This product can be used by children aged from 8 years and above and persons with reduced physical, sensory or mental capabilities or lack of experience and knowledge if they have been given supervision or instruction concerning use of the product in a safe way and understand the hazards involved. Children shall not play with the product. Cleaning and user maintenance shall not be done by children without supervision.

hotels, motels and other residential type environments and/or in bed and breakfast type environments.

The product is not intended for professional use.

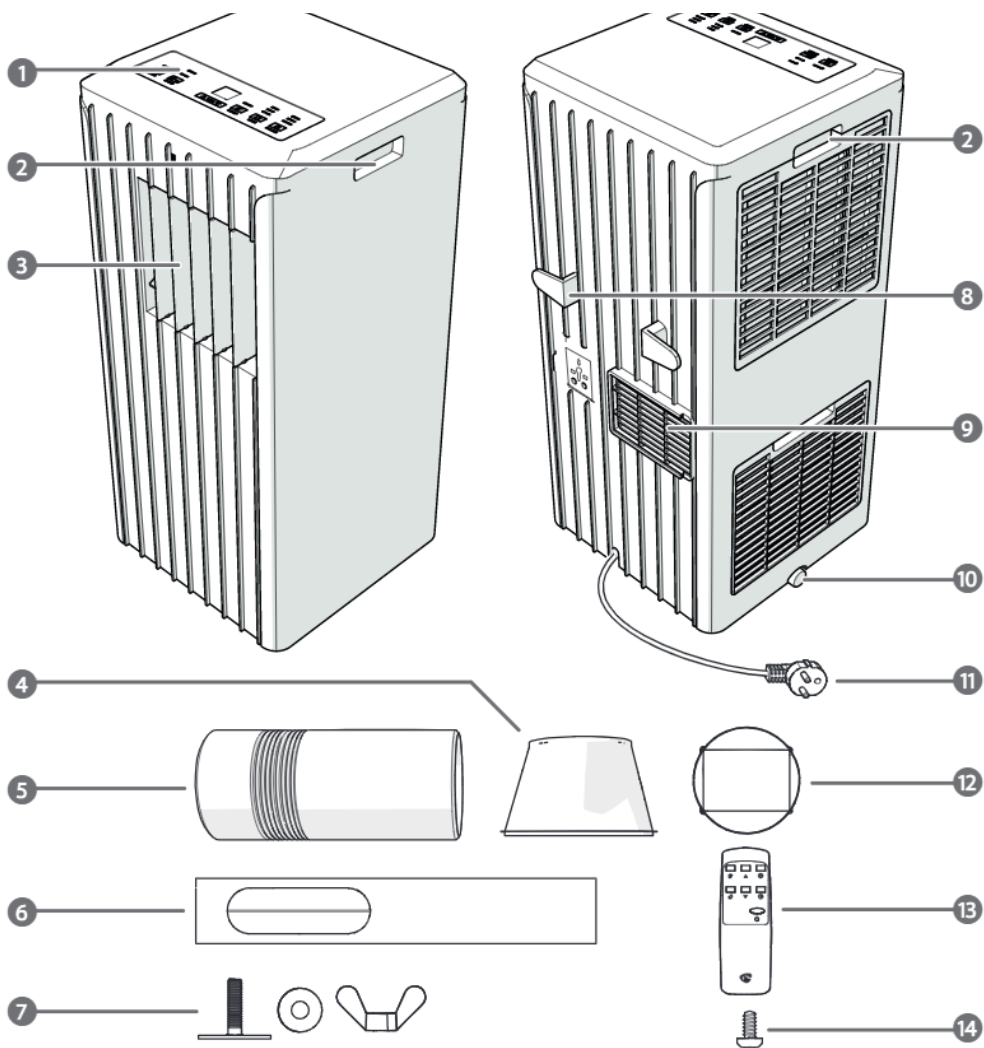
Specifications

Product	Wi-Fi Smart Air Conditioner
Article number	WIFIACMB3WT9
Dimensions (d x w x h)	320 x 310 x 715 mm
Weight	22.0 kg
Input voltage	220 – 240 V ~ 50 Hz
Required power	1010 W
Energy class	A
Energy efficiency ratio (EER)	2.6
Noise level	≤ 65 dB(A)
Cooling capacity	9000 BTU
Room size capacity	18 - 27 m²
room coverage*	80 m³
Air circulation	350 m³ / h
Dehumidification	24 l/day
Refrigerant	R290 / 195 g
Power plug	Schuko CEE 7/7
Battery type	2 x AAA (not included)

Max. allowable pressure	3.0 MPa
Operation modes	Cooling / Dehumidifying / Fan
Fan speed levels	high / low
Max. radio transmit power	802.11b 17.5 dBm 802.11g 14.5 dBm 802.11n 13.5 dBm
Antenna gain	2.5 dBi
Used frequency band	2412 - 2472 MHz
Modulation method	DSSS, OFDM, 64QAM

* The performance of the air conditioner is subjected to many factors like floor space, ceiling height, level of isolation and number of windows. The data mentioned is based on a space with low heat loads.

Main parts (image A)



A

1 Control panel

2 Handle

3 Swing louvers

4 Exhaust nozzle

5 Exhaust hose

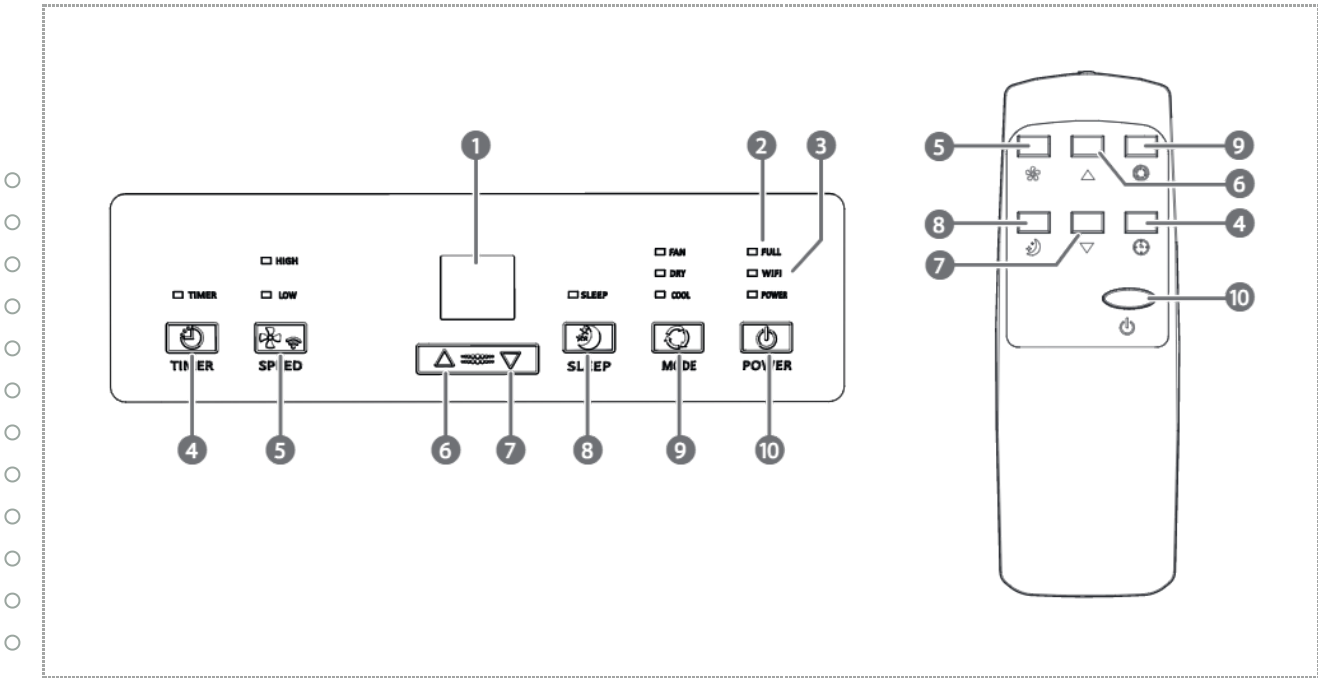
6 Window kit

7 Window kit fasteners

8 Power cable storage

10	Drainage outlet
11	Power cable
12	Exhaust hose connector
13	Remote control
14	Exhaust nozzle screw

Display and remote control (image B)



B

1	Display screen
2	Full indicator
3	WIFI indicator
4	Timer button
5	Speed button

	DOWN button
8	Sleep button
9	Mode button
10	Power button

Safety instructions

WARNING


- Ensure you have fully read and understood the instructions in this document before you install or use the product. Keep the packaging and this document for future reference.
- Only use the product as described in this document.
- Install the product in accordance with national wiring.
- Do not use a damaged or defective product, but return it for repair or replacement.
- • Close supervision is necessary when the product is used by or near children, animals or infirm persons. Do not allow children to play with it or touch it.
- • Only move the product in an upright position.
- • Keep the product out of reach from children.
- • Place the product on a stable and flat surface.
- • Leave a minimum of 0.5 m free space around the air outlet and swing louvers to allow a good circulation of airflow.
- • If the product has been tilted, allow it to stand upright for 2 hours before plugging it in.
- • Do not drop the product and avoid bumping.
- • This product may only be serviced by a qualified technician for maintenance to reduce the risk of electric shock.
- Do not expose the product to water or moisture.
- If the product is immersed in water, do not touch the product or the water.
- Shut off the main power grid and carefully remove the plug from the power outlet.
- After the product has been immersed or covered in water or other liquids, do not use the product again.
- Do not place the product in environments with high humidity, like a bathroom or laundry.
- Keep the product away from heat sources. Do not place the product on hot surfaces or near open flames.

- Always disconnect the product from the power outlet when cleaning or moving the product
- Do not pull the power cable to move the product.
- Unplug the product from the power source and other equipment if problems occur.
- Switch off the main power switch before unplugging the power cord.
- Do not use the product when the cord or plug is damaged.
- Do not unplug the product by pulling on the cable. Always grasp the plug and pull.
- Make sure that the electrical supply in your area matches a voltage of 220 – 240 VAC and a frequency of 50 Hz.
- Connect to a grounded socket only.
- If necessary, use an earthed extension cable of a suitable diameter.
- Fully extend the power cord and make sure the power cord does not contact the product.
- When using an extension cord, use one which is as short as possible and fully extended.
- Do not use external timers or remote control systems to switch the product on or off.
- Do not use mechanical products or other means to accelerate the defrosting process, other than those recommended by the manufacturer.
- Ensure people do not trip over the cord.
- Do not leave the product unattended when switched on.
- R290 is a refrigerant gas that complies with the European directives on the environment.
- Be aware that refrigerants can be odorless.
- Place the product in an area without any continuous sources of ignition (for example: open flames, gas or electrical appliances in operation).
- Keep the product at a distance from flammable objects such as furniture, curtains and similar.
- Only install, operate and store the product in a room with a floor area above 9 m².
- Do not block ventilation openings and make sure that there is enough space around the product.
- Only use the provided exhaust hose.
- Do not block the exhaust hose. Blocking the exhaust hose may cause overheating.
- Do not twist the exhaust hose.
- Ensure that the exhaust hose does not kink.
- Do not use aggressive chemical cleaning agents such as ammonia, acid or acetone when cleaning the product.
- Only store the product in a well-ventilated area.


or other sources of ignition.

- Only persons with a current valid certificate from an industry-accredited assessment authority, which authorizes their competence to handle refrigerants safely in accordance with an industry recognized assessment specification, can work on or break into a refrigerant circuit.
- Servicing can only be performed as recommended by the equipment manufacturer. Maintenance and repair requiring the assistance of other skilled personnel can only be carried out under the supervision of the person competent in the use of flammable refrigerants.
- When defrosting and cleaning the product, do not use any means other than those recommended by the manufacturing company.
- Do not puncture or heat any part of the refrigerant circuit.

Explanation of the safety symbols on the product

Icon	Description
	<ul style="list-style-type: none">• Contains one or more (extremely/highly) flammable components.

Explanation of the symbols on the product or packaging

Icon	Description
	Electronic equipment needs to bear the CE mark in order to be marketed in the EU. CE marking shows that a product is assessed before being placed on the market and that it meets EU safety, health and environmental protection requirements. CE marking is also sometimes accepted as a means of compliance with type-approval requirements; for example, electronic components that require type-approval and also CE marking for electromagnetic compatibility (EMC) or low-voltage equipment.

Installation

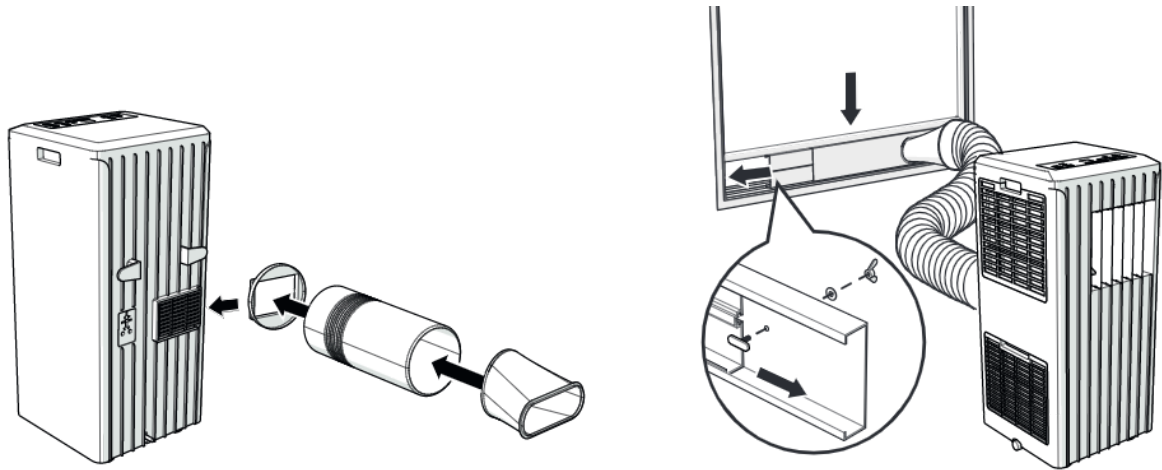
Check the contents of the package

Check that all parts are present and that no damage is visible on the parts. If parts are missing or damaged, contact the Nedis B.V. service desk via the website: www.nedis.com.

Installing the product

- i** Place the product on a stable and flat surface.
- i** Only move the product in an upright position.
- i** Leave a minimum of 0.5 m free space around the air outlet and swing louvers to allow a good circulation of airflow.
- i** If the product has been tilted, allow it to stand upright for 2 hours before plugging it in.
- i** Keep the product at a distance from flammable objects such as furniture, curtains and similar.
- i** Do not block ventilation openings and make sure that there is enough space around the product.
- i** Only install, operate and store the product in a room with a floor area above 9 m².
- 1. Plug the power cable **A11** into the power outlet.

Assembling the exhaust (image **C**)



C

- i** Only use the provided exhaust hose.
- i** Do not block the exhaust hose. Blocking the exhaust hose may cause overheating.

1. Assemble the exhaust hose **A5**, the exhaust nozzle **A4** and the exhaust hose connector **A12**.

- 2. Slide **A12** over the air outlet **A9**.
- 3. Extend **A5** up to 1500 mm.
- **i** Do not twist the exhaust hose.
- **i** Ensure that the exhaust hose does not kink.
- 4. Assemble the window kit **A6** with the window kit fasteners **A7**.
- 5. Install **A6** in the window opening.
- 6. Tighten **A7**.
- 7. Snap **A4** into **A6** and fasten with the exhaust nozzle screw **A14**.
-
-

Assembling the continuous drainage (optional)

1. Open the drainage outlet **A10**.
2. Connect **A10** to a water container or drainage system (not included).

Placing the batteries in the remote control

1. Slide the battery cover off the back of the remote control **A13**
2. Insert 2 type AAA batteries.
3. Slide the battery cover back in place on **A13**

1. Download the Nedis Smartlife app for Android or iOS on your phone via Google Play or the Apple App Store.
2. Open the Nedis Smartlife app on your phone.
3. Create an account with your mobile phone number or your e-mail address and tap **Continue**.
- i** You will receive a verification code on your mobile phone or e-mail address.
4. Enter the received verification code.
5. Create a password and tap **Done**.
6. Tap **Add Home** to create a SmartLife Home.
7. Set your location, choose the rooms you want to connect with and tap **Done**.

Adding a product to the Nedis SmartLife app

1. Switch on the product.
2. Tap + in the Nedis SmartLife app.
3. Select the device type you want to add from the list.
4. Confirm the Wi-Fi indicator LED **B3** is blinking fast.
- i** If **B3** is not blinking fast, press the Speed button **B5** on the product for 5 seconds during standby mode to reset the product.
5. Follow the instructions in the Nedis SmartLife app.
6. Rename the product after it has been found and added.
7. After confirming you can control the product with your smartphone.
- To connect your SmartLife account to Amazon Alexa and/ or Google Home, set it up using the "Smart Life" action or skill. For more details check the instruction on either Amazon or Google.

Use

Using the control panel and remote control

Button	Function
Timer button B4	Press to set the timer. Use B6 and B7 to set the duration of cooling.
Speed button B5	Press the speed button during COOL or FAN mode

	fan speed operation.
Up button B6	Increase values.
Down button B7	Decrease values.
Sleep button B8	Activate sleep mode. Only works in COOL mode. After one hour the set temperature increases 1 °C and again after 2 hours.
Mode button B9	Repeatedly press the mode button the select the mode: FAN / DRY (dehumidifying) / COOL.
Power button B10	Switch the product on or off.

Frost protection function

- The product automatically enters the frost protection status if the temperature of the
- exhaust pipe is too low (only works in COOL and DRY mode).
- The product automatically reverts to the normal operation if the temperature of the exhaust
- pipe rises to a certain temperature.

Protection function of the compressor

- To increase the lifetime of the compressor, it has a 3 minute delay booting protection
- function after the compressor is switched off.

The overflow protection function

If water exceeds the warning level, the product emits a tone, and the ‘water full’ indicator starts flashing.
(See next paragraphs how to empty the water reservoir of the product.)

Manual drainage

The FULL indicator **B2** flashes and the product emits an alarm sound to indicate that the water reservoir is full.

- ## Troubleshooting

☐ The product does not work.

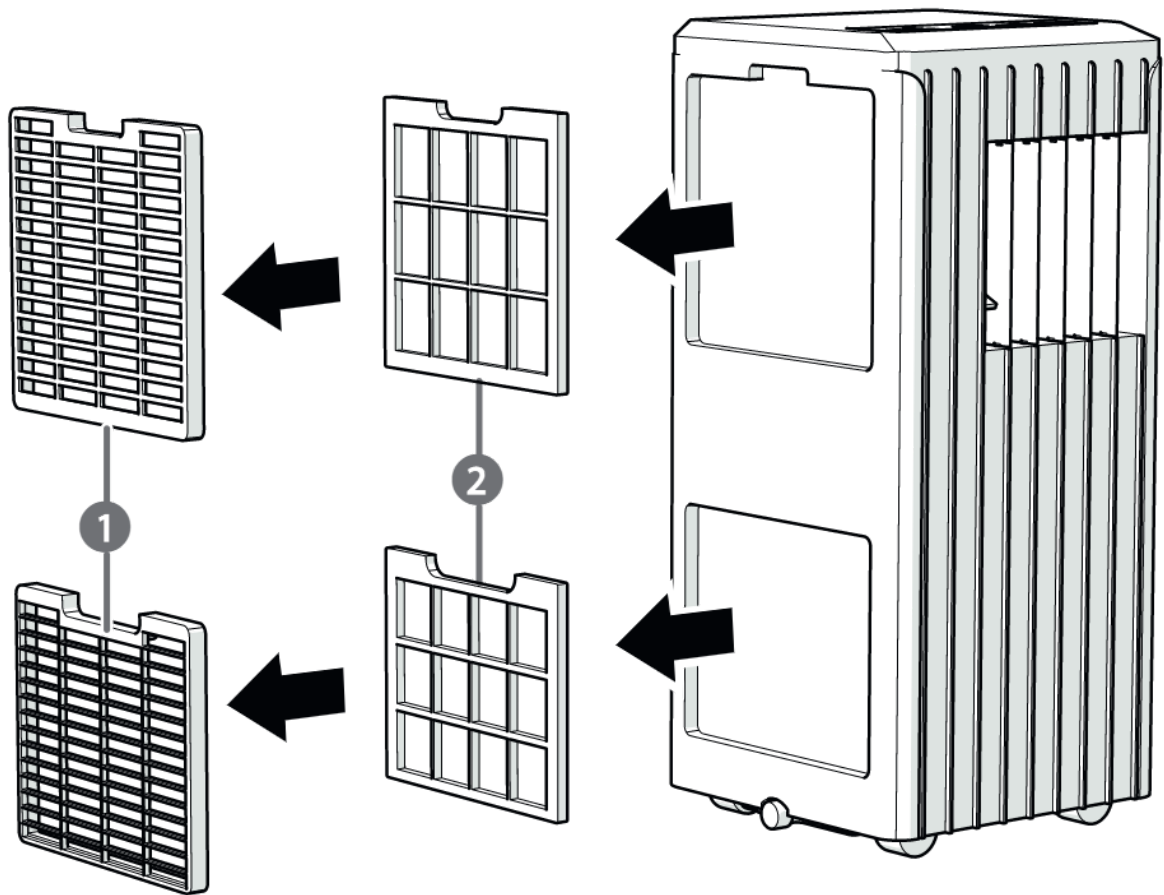
	blocked.	Clear obstructions.
The product makes abnormal noises.	The product is not placed on a flat surface.	Place the product on a flat and hard surface to reduce the noise.
The compressor does not work.	The overheat protection starts.	Wait 3 minutes until the temperature has decreased.
The remote control does not work.	The distance between the product and the remote control is too far.	Aim the remote control directly at the receiver.
	The remote control is not aligned with the receiver. Aim the remote control directly at the receiver.	Aim the remote control directly at the receiver.
	The batteries are empty.	Replace the batteries.
The product displays 'E2'.	The pipe temperature sensor is abnormal.	Contact a qualified technician for service/repair.
The product displays 'E1'.	The room temperature sensor is abnormal.	Contact a qualified technician for service/repair.

Maintenance

Clean the product regularly with a soft, clean, dry cloth. Avoid abrasives that can damage the surface.

Do not use aggressive chemical cleaning agents such as ammonia, acid or acetone when cleaning the product.

Cleaning the product (image D)



D

1 Grids

2 Filter screens

1. Switch off and unplug the product when not in use or before maintenance.
 2. Pull off the grids **D1**.
 3. Remove the filter screens **D2** from **D1**.
 4. Clean **D2** in warm water (about 40 °C) with a neutral detergent.
 5. Rinse and dry **D2** in the shade.
 6. Put back **D2** in **D1**.
 7. Put back **D1** together with **D2**.
 8. Clean the outside of the product with a soft, clean, lightly damp cloth.
- i** Do not use aggressive chemical cleaning agents such as ammonia, acid or acetone when cleaning the product.

Store the product as follows:

1. Drain the product.
2. Press **B10** to switch on the product.
3. Press **B5** to switch to low fan speed operation.
4. Wait until **A10** is dry.
5. Switch off the product and put the drainage plug back.
6. Unplug the product.
7. Remove **A5**.
8. Remove the batteries from **A13** during long periods of disuse to avoid possible leakage.
9. Cover the product with a plastic bag.
10. Store the product in a dry place away from sunlight and protect it against excessive dust and dirt.

Warranty

Any changes and/or modifications to the product will void the warranty. We accept no liability for damage caused by improper use of the product.

Disclaimer

Designs and specifications are subject to change without notice. All logos, brands and product names are trademarks or registered trademarks of their respective owners and are hereby recognized as such.

Disposal



This symbol indicates that this product should not be thrown away with other household waste throughout the EU. To prevent possible harm to the environment or human health by uncontrolled waste disposal, you are responsible for recycling it so that it can promote the sustainable reuse of raw materials. To return your used product, you can use the regular return and collection systems or contact the store where the product was purchased. They can recycle this product for the environment.

-
-
-
-
-
-
-
-
-
-
-
-